

The King's Fund >

Ideas that change
health care



Health Campus

...a unique home for organisations
changing health and care



About The King's Fund Health Campus

Our building sits in the heart of London and is a stone's throw from Harley Street; the internationally renowned medical base and hub of health and care innovation. As well as being the site of our ground-breaking work in health policy, leadership and organisational development, The King's Fund Health Campus offers serviced office space to other organisations committed to improving health and care.

Small to medium-sized businesses choosing to make the Health Campus their headquarters benefit from The King's Fund Library service and café, and enjoy the advantage of being the first to hear about our industry-leading events and activities.



On-site amenities and services

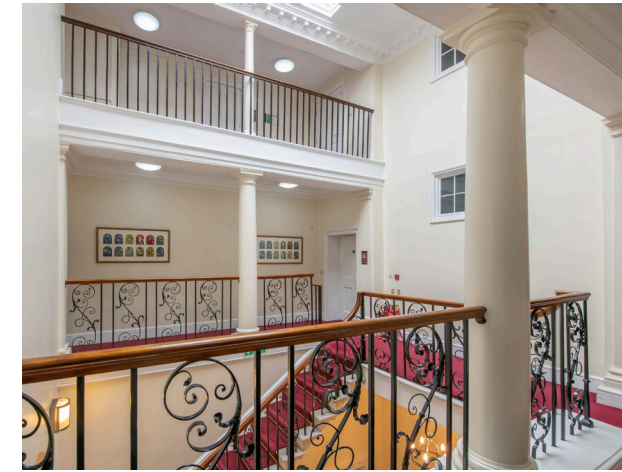
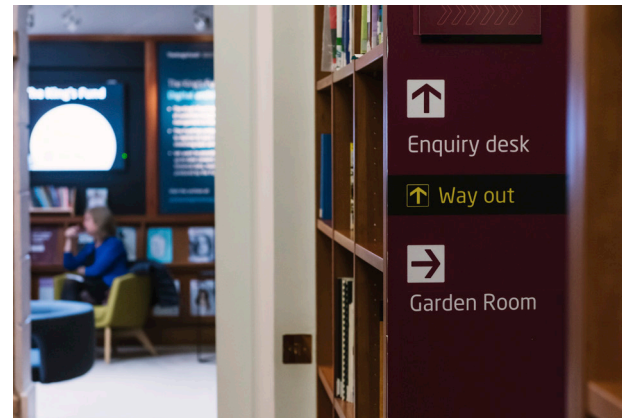
The King's Fund occupies a Grade II-listed Georgian townhouse, offering state-of-the-art facilities, access to our Library and a 282-seat theatre.

The key features include:

- Library
- the Green House café
- 3,573 sq ft of serviced office space over four floors
- air conditioning
- perimeter and underfloor trunking
- passenger lifts
- exclusive rates for venue hire in our No.11 Cavendish Square spaces.

Each floor of The King's Fund Health Campus has a variety of offices to suit your needs. Choose from spaces ranging from:

Lower ground floor	380 - 430 sq ft
Ground floor	326 - 501 sq ft
1st floor	109 - 496 sq ft
2nd floor	95 - 594 sq ft
3rd floor	97 - 458 sq ft



Wide range of accommodation options

The available accommodation comprises 3,573 sq ft of office space arranged over the ground floor and three upper floors. Whether you need one room, two rooms or whole floors, The King's Fund Health Campus will have the office solution for you.

Sustainability, accessibility and corporate social responsibility

The King's Fund is committed to minimising its effect on the environment, maintaining the accessibility of the site, and behaving ethically and responsibly in all our activities. By making the Health Campus your headquarters, you'll have a positive impact on your people, community and the environment. This includes:

- fully accessible premises with disabled parking located nearby
- six accessible toilet facilities across four floors
- induction loop system at reception and in all three theatres
- sign language and disability awareness-trained staff
- proximity to public transport (Oxford Circus and Bond Street underground stations, Euston and King's Cross mainline stations, and St Pancras International)
- green-travel plan encouraging use of public transport, or walking and cycling
- cycle storage
- 'zero to landfill' ambitions
- composting food waste for use on farmland
- incineration of non-recyclables producing clean electricity for London
- filtered water rather than bottled water
- biodegradable food packaging in the café
- recycling plastics, paper, card, print cartridges, light bulbs, furniture and IT equipment
- motion sensor lighting and air conditioning
- sustainably sourced tech, energy and furniture

Special rates for tenants

Health Campus tenants who choose to opt for venue hire at The King's Fund will benefit from discounted fees.



Access to a wealth of expertise and facilities

Library service

The King's Fund Library is a unique source of information on health and social care policy and management. Visitors are welcome to use the Library space and the specialist resources. We offer a free enquiry service, and queries can be submitted via email, phone or in person.

The Green House café

Our light and airy café serves drinks, soups, sandwiches and snacks throughout the day and is a comfortable place for informal meetings and somewhere to check your emails using free wi-fi.



...a place to meet, share ideas,
debate, discuss and learn

The King's Fund is an independent charitable think tank. Our headquarters are in central London, the hub of the health-sector community, a community you can benefit from being part of.

Our objectives, set out by royal charter, are:

...the promotion of health and the alleviation of sickness for the benefit of the public by working with and for health care organisations...

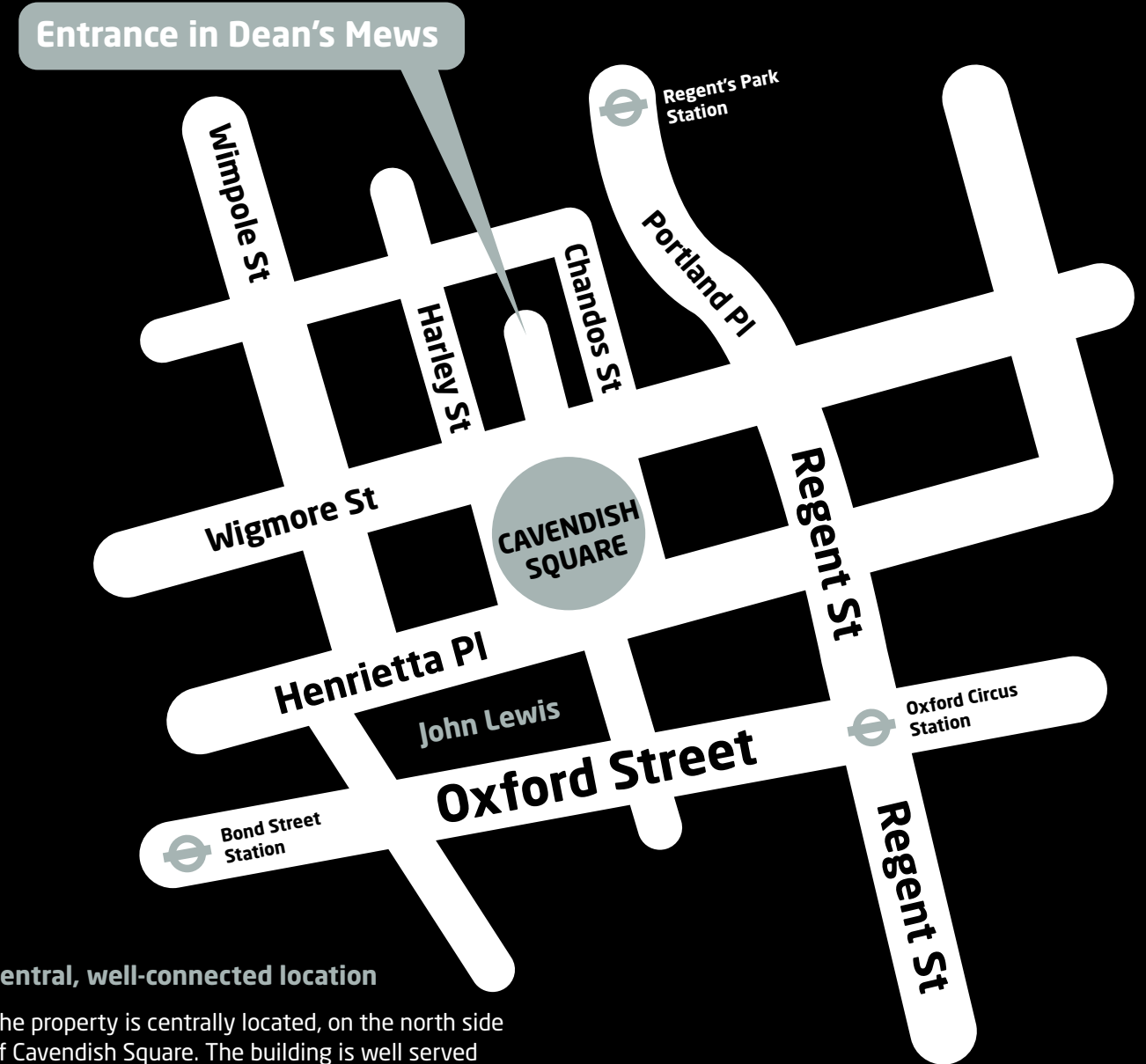


Our work across the health and care system includes:

- expert policy analysis and research
- collecting and sharing knowledge through our Library
- developing individuals, teams and organisations to improve services and build leadership.

We are proud that our work has enabled us to positively influence both national policy and the delivery of patient care. Our independence allows us to work across political boundaries, with all professional groups and the public, private and voluntary and community sectors. By joining our Health Campus, you are uniquely positioned to benefit from working closely with us.

Entrance in Dean's Mews



Central, well-connected location

The property is centrally located, on the north side of Cavendish Square. The building is well served by public transport links including Bond Street and Oxford Circus underground stations on the Central, Victoria, Bakerloo and Jubilee lines.

Be part of this unique community

We offer the opportunity for small to medium-sized organisations to rent office space in our Health Campus for a minimum tenancy of three years. This will offer unique opportunities to collaborate and network with other health professionals, including The King's Fund staff. You can benefit from the ease of access to a host of dedicated events and seminars run by The King's Fund.



Interested in joining The King's Fund's Health Campus?

To discuss the office space available or to arrange a tour with a member of our team, contact healthcampus@kingsfund.org.uk

The King's Fund
11-13 Cavendish Square
London W1G 0AN
Tel: 020 7307 2568

www.kingsfund.org.uk