

Changing professional roles

In England, one in ten of the working population works in health and social care.



There are around 3 million volunteers currently working in the health and social care system in England.



Volunteers



Social care
employees



NHS
employees

The ageing population will lead to a rapid increase in demand for adult social care. Between 2010 and 2025 the adult social care workforce would need to increase by at least 1 million jobs.

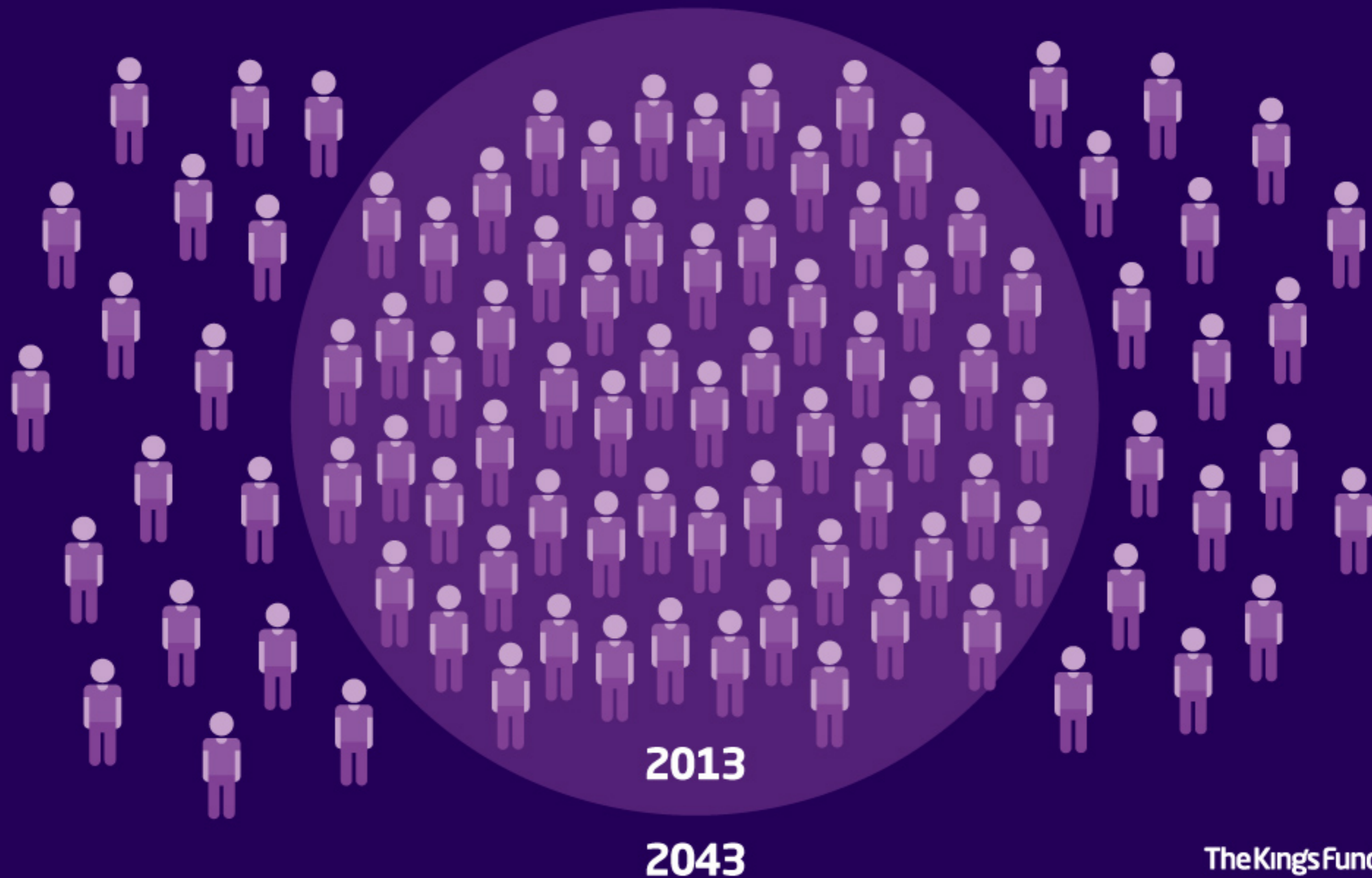
2010



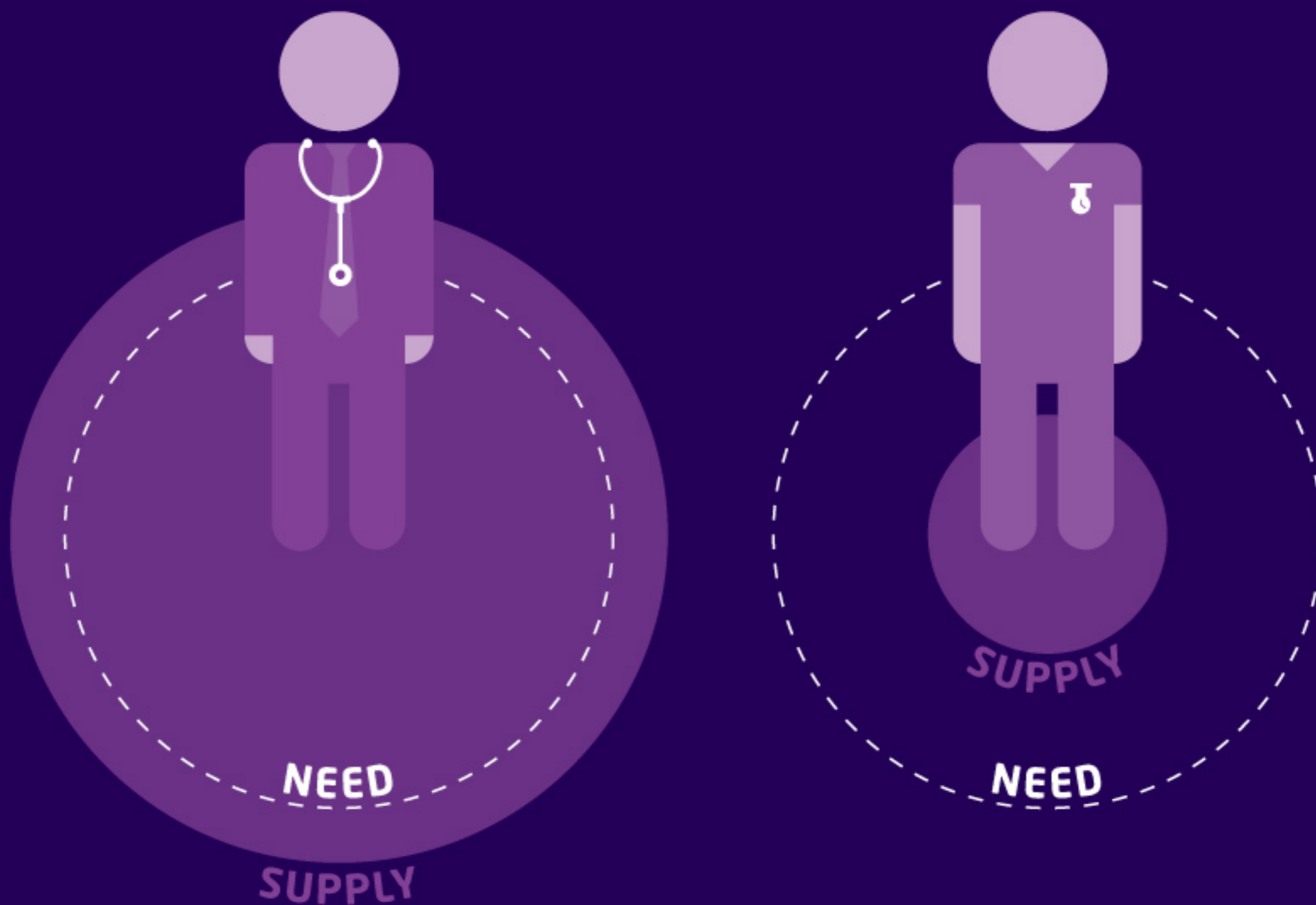
2025

+1 million

There are almost 6 million informal carers in the UK. By 2043, the number of informal carers will need to increase by 3.4 million.



By 2020, there will be a potential oversupply of 2,000 hospital consultants. By 2021 there will be a potential shortfall of between 40,000 and 100,000 nurses.



In 2001 there were 12,800 district nurses in England; in 2011 this had decreased by 36 per cent to 8,200.



If consultation patterns remain unchanged, the total number of primary care (GP and nurse) consultations in England could rise from 300 million to 433 million between 2008 and 2035.

**300
million**

2008



**433
million**

2035