

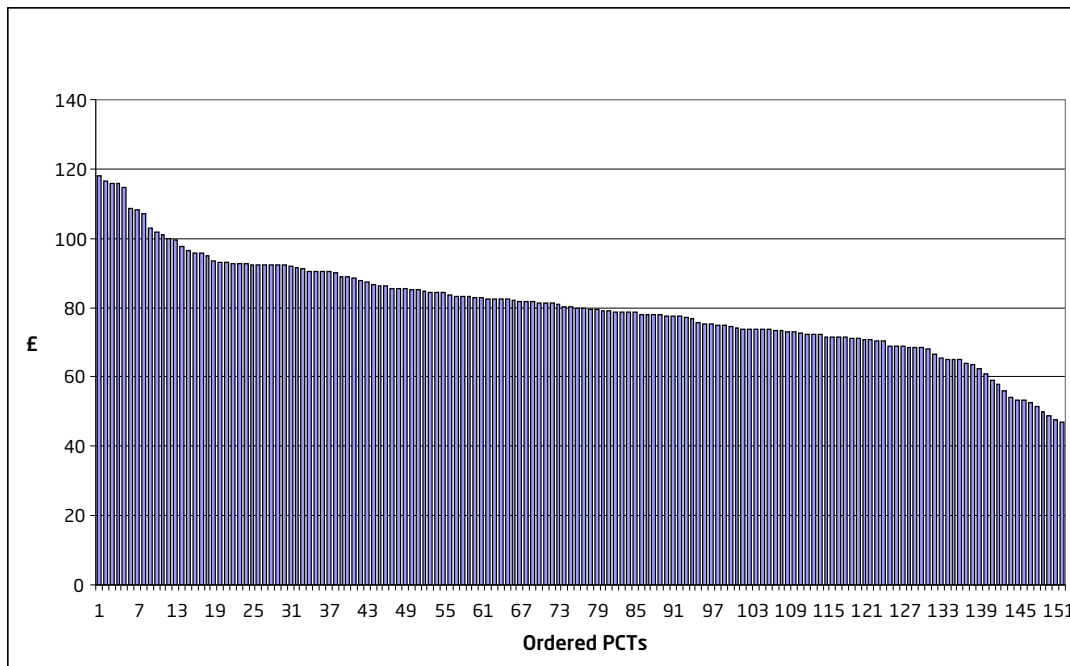
Appendix 2

PCT spending on cancers and tumours

The following figure and table accompany The King's Fund update, *NHS spending: local variations in priorities*,¹ published in September 2008. This data has been produced by The King's Fund, based on National Programme Budget project data.²

Primary care trust (PCT) spending per head represents actual spending adjusted to reflect differential needs, demography and costs for health care across PCTs (using the aggregate needs, age and cost weighting used to determine PCTs' 'target' budgets each year). Spending is also adjusted to take account of the fact that the actual allocations for some PCTs in 2006/7 are either above or below their 'target' budget as determined by the weighted capitation formulae.

PCT spending per head by PCTs on cancers and tumours, weighted for need, age, costs and distance from allocation target, 2006/7 (ordered by spending level)



PCT spending per head on cancers and tumours, weighted for need, age, costs and distance from allocation target, 2006/7, ordered by spending level

Primary care trust (PCT)	Spending per head (£)
Knowsley PCT	118
Nottingham City PCT	116
Bournemouth and Poole Teaching PCT	116
Wakefield District PCT	116
Trafford PCT	115
Lincolnshire Teaching PCT	109
Torbay Care Trust	108
Salford Teaching PCT	107
North Somerset PCT	103
Warwickshire PCT	102
Cumbria PCT	101
South Tyneside PCT	100
Surrey PCT	99
Gateshead PCT	98
Leicestershire County and Rutland PCT	96
Norfolk PCT	96
Birmingham East and North PCT	96
Stockport PCT	95
Great Yarmouth and Waveney Teaching PCT	94
Hampshire PCT	93
West Cheshire PCT	93
North Yorkshire and York PCT	93
Wolverhampton City PCT	93
Berkshire West PCT	93
West Kent PCT	93
Shropshire County PCT	92
Blackpool PCT	92
North East Essex PCT	92
North Lincolnshire PCT	92
Leicester City Teaching PCT	92
Worcestershire PCT	92
Leeds PCT	92
Calderdale PCT	91
North East Lincolnshire PCT	91
Manchester PCT	90
Northamptonshire Teaching PCT	90
County Durham PCT	90
North Lancashire PCT	90
Derby City PCT	89
Redbridge PCT	89
Nottinghamshire County Teaching PCT	88
East and North Hertfordshire PCT	88
Mid Essex PCT	87
Sutton and Merton PCT	87
Bath and North East Somerset PCT	86

Primary care trust (PCT)	Spending per head (£)
Medway Teaching PCT	86
Bristol Teaching PCT	86
Dudley PCT	86
Sheffield PCT	85
Hartlepool PCT	85
Somerset PCT	85
Derbyshire County PCT	85
South Staffordshire PCT	85
Hastings and Rother PCT	84
South East Essex PCT	84
Hounslow PCT	84
Cambridgeshire PCT	83
Swindon PCT	83
Blackburn with Darwen Teaching PCT	83
East Riding Of Yorkshire PCT	83
Bradford and Airedale Teaching PCT	83
Bolton PCT	83
Berkshire East Teaching PCT	83
South Birmingham PCT	83
Coventry Teaching PCT	82
Walsall Teaching PCT	82
Portsmouth City Teaching PCT	82
Oxfordshire PCT	82
Middlesbrough PCT	82
Warrington PCT	81
Ashton, Leigh and Wigan PCT	81
Suffolk PCT	81
Sefton PCT	81
East Sussex Downs and Weald PCT	80
Havering PCT	80
Wiltshire PCT	80
Dorset PCT	80
Solihull Care Trust	80
Rotherham PCT	79
Herefordshire PCT	79
Devon PCT	79
East Lancashire PCT	79
Hull Teaching PCT	79
Bromley PCT	79
Sandwell PCT	79
Barnet PCT	78
Plymouth Teaching PCT	78
Gloucestershire PCT	78
Buckinghamshire PCT	78
Darlington PCT	78
Bassetlaw PCT	77
Bexley PCT	77
Newcastle PCT	77

Primary care trust (PCT)	Spending per head (£)
Doncaster PCT	77
South Gloucestershire PCT	76
Croydon PCT	75
Central Lancashire PCT	75
Kirklees PCT	75
Heywood, Middleton and Rochdale PCT	75
West Hertfordshire PCT	75
Liverpool PCT	74
Kingston PCT	74
West Sussex Teaching PCT	74
Stockton-on-Tees Teaching PCT	74
West Essex PCT	74
Central and Eastern Cheshire PCT	74
Halton and St. Helens PCT	73
North Staffordshire PCT	73
Wirral PCT	73
Telford and Wrekin PCT	73
Waltham Forest PCT	73
Barnsley PCT	72
Isle of Wight Healthcare PCT	72
Northumberland Care Trust	72
Barking and Dagenham PCT	72
Oldham PCT	72
Richmond and Twickenham PCT	71
Stoke On Trent Teaching PCT	71
Sunderland Teaching PCT	71
Eastern and Coastal Kent Teaching PCT	71
Cornwall and Isles Of Scilly PCT	71
Peterborough PCT	71
Milton Keynes PCT	70
North Tyneside PCT	70
Southampton City PCT	69
Haringey Teaching PCT	69
City and Hackney Teaching PCT	69
Enfield PCT	69
Bury PCT	69
Redcar and Cleveland PCT	68
Greenwich Teaching PCT	68
Heart of Birmingham Teaching PCT	67
Tower Hamlets PCT	65
Brighton and Hove City Teaching PCT	65
Hammersmith and Fulham PCT	65
Tameside and Glossop PCT	65
Lewisham PCT	64
Islington PCT	64
Lambeth PCT	62
Camden PCT	61
Hillingdon PCT	59

Primary care trust (PCT)	Spending per head (£)
Brent Teaching PCT	58
Wandsworth PCT	56
Luton Teaching PCT	54
South West Essex Teaching PCT	53
Harrow PCT	53
Bedfordshire PCT	53
Southwark PCT	51
Kensington and Chelsea PCT	50
Newham PCT	49
Westminster PCT	48
Ealing PCT	47

1. The King's Fund website. Available at: www.kingsfund.org.uk/go.rm?id=3257
2. National Programme Budget Project: details and data accessible from:
www.dh.gov.uk/en/Managingyourorganisation/Financeandplanning/Programmebudgeting/index.htm